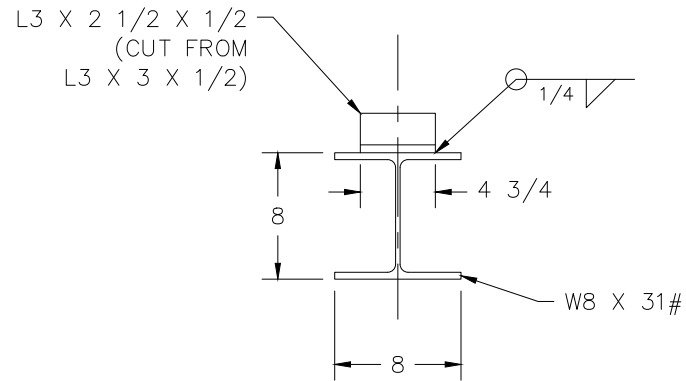


1/4 ϕ HOLE TO FACILITATE GALVANIZING PROCESS




NOTES:

- 1- MATERIAL: STEEL A36, HOT DIP GALVANIZED AFTER FABRICATION IN ACCORDANCE WITH ASTM A-123
- 2- LOADING: H-25 WHEEL LOADS
- 3- APPROXIMATE WEIGHT: 120 LBS.

THIS DOCUMENT IS THE PROPERTY OF U.S.F. FABRICATION, INC AND CONTAINS PROPRIETARY INFORMATION. IT SHALL NOT BE MODIFIED, COPIED, FURNISHED NOR DISTRIBUTED (IN WHOLE OR IN PART) WITHOUT PROPER AUTHORIZATION OF U.S.F. FABRICATION, INC.

INTERPRET DIMENSIONS AND TOLERANCES PER ASME Y14.5M
BREAK ALL SHARP CORNERS & EDGES
TOLERANCES UNLESS OTHERWISE SPECIFIED:
INCHES AND FRACTIONS:
<10' = $\pm 1/8$
>10' = $\pm 1/4$

COPYRIGHT © 2022 ALL RIGHTS RESERVED

STANDARD No. MD-374.13 - INLET TYPE NR			
MARYLAND DEPARTMENT OF TRANSPORTATION			
 U.S.F. FABRICATION INC. HIALEAH, FLORIDA			
SUPPORT BEAM STEEL GALVANIZED			
DRAWN BY: DAV/ALJ	SCALE: 1=8	SHEET: 1 of 1	DATE: 04/14/22
APP'D BY: DAV/ALJ	DWG. NO.: 1000130370	SHEET SIZE: B	REV: 0