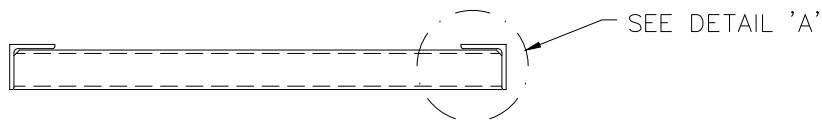
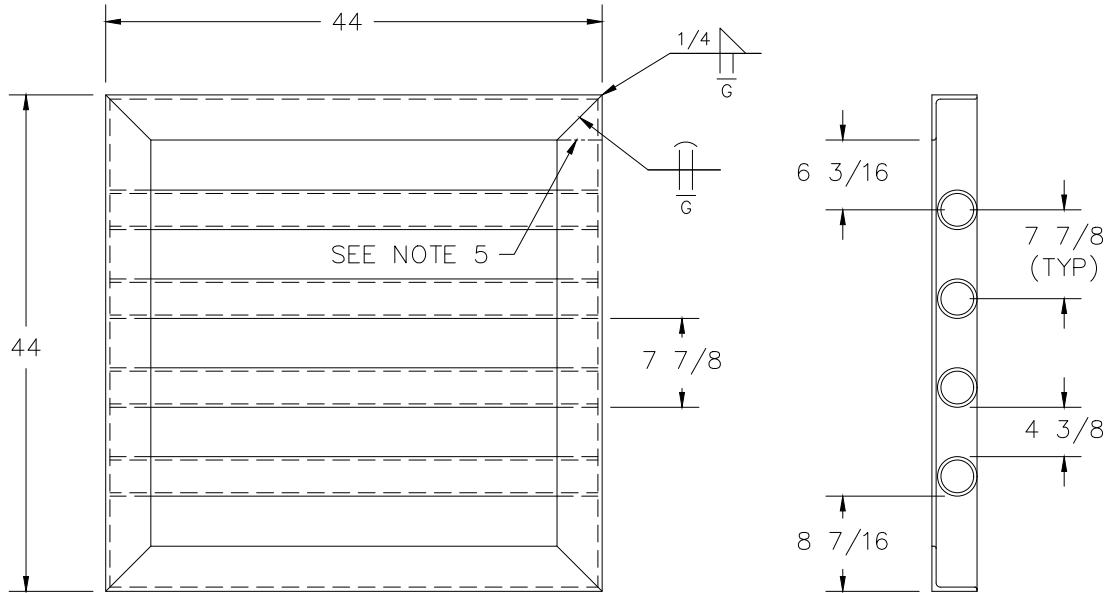


DETAIL 'A'



NOTES:

- 1- MATERIAL: STEEL (DOMESTIC MATERIAL), PAINTED WITH 2 COATS OF ZINC-IRON OXIDE BASE PRIMER & FINISHED WITH 1 COAT OF BLACK ALKYD GLOSS ENAMEL. ALL PRODUCTS SHALL BE HIGH QUALITY COMMERCIAL PAINTS. TOTAL PAINT THICKNESS SHALL BE 7 MILS.
- 2- APPROXIMATE WEIGHT: 291 LBS.
- 3- APPROXIMATE FLOW AREA: 798.75 SQ. INCHES.
- 4- LOAD RATING: 3,600 PSF = 57.5 FT OF WATER.
- △ 5- CORNERS MAY BE CUT AS SHOWN OR CUT SQUARE & NOTCHED ACCORDINGLY

3	8/13/24	DAV/DAV	UPDATED DRAWING PER ECO 25-005	
2	09/13/21	PR/PR	ADDED LOAD RATING	
1	08/25/21	PR/PR	ADDED FLOW AREA	
REV.	DATE	BY	APP'D	DESCRIPTION

UNLESS OTHERWISE NOTED ON THIS DRAWING, CLEARANCE BETWEEN FRAME AND COVER(S) IS DESIGNED NOT TO EXCEED 3/8".

THIS DOCUMENT IS THE PROPERTY OF U.S.F. FABRICATION, INC AND CONTAINS PROPRIETARY INFORMATION. IT SHALL NOT BE MODIFIED, COPIED, FURNISHED NOR DISTRIBUTED (IN WHOLE OR IN PART) WITHOUT PROPER AUTHORIZATION OF U.S.F. FABRICATION, INC.

INTERPRET DIMENSIONS AND TOLERANCES PER ASME Y14.5M

BREAK ALL SHARP CORNERS & EDGES

TOLERANCES UNLESS OTHERWISE SPECIFIED:

INCHES AND FRACTIONS:
 <10' = ± 1/8
 >10' = ± 1/4

COPYRIGHT © 2024
 ALL RIGHTS RESERVED

SCDOT DROP INLET TYPE 112



U.S.F. FABRICATION INC.
 HIALEAH, FLORIDA

STEEL GRATE
 42 X 42

DRAWN BY: DAV	SCALE: 1=12	SHEET: 1 of 1	DATE: 10/30/15
APP'D BY: DAV	DWG. NO: 1000002060	SHEET SIZE: B	REV: 3