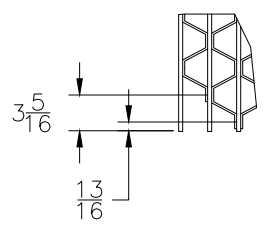
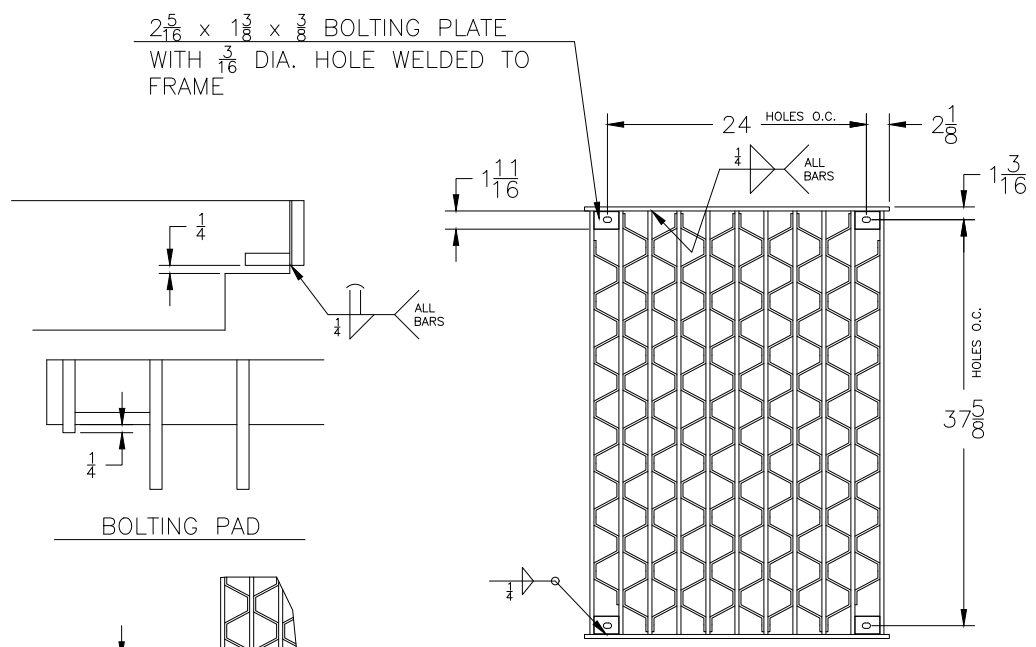
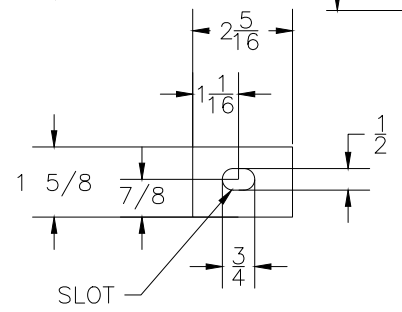
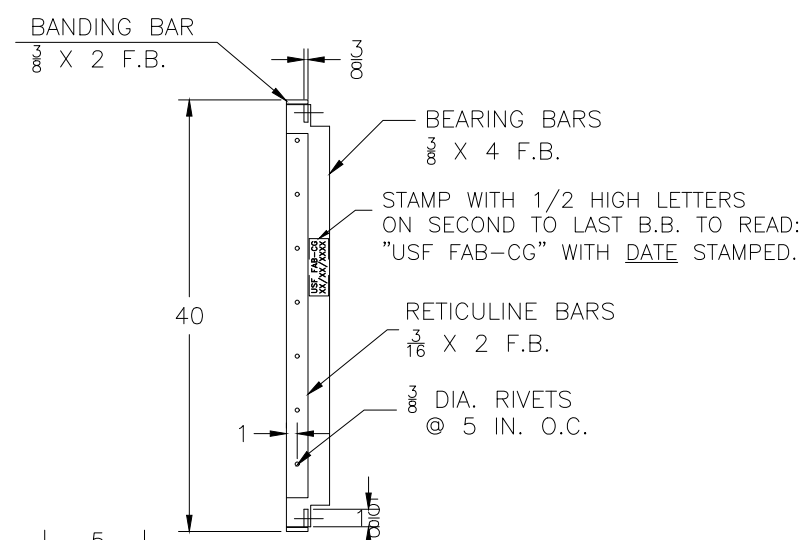


ITEM:60
QTY:4 PCS
MAT. 3/8 PLATE

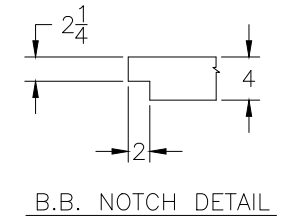
PLASMA



GRATE FAB. DETAIL



SLOT
ITEM:60
QTY:4 PCS



B.B. NOTCH DETAIL

- NOTES:
- 1- MATL: STEEL, HOT DIP GALVANIZED AFTER FABRICATION.
 - 2- LOADING: DESIGNED FOR OFF STREET LOCATIONS WHICH MAY OCCASIONALLY RECEIVE H-20 WHEEL LOADS.
 - 3- APPROX. GRATE WEIGHT: 266 LBS. ±5%
 - 4- ALL JOINTS FULL DEPTH 1/4" FILLET WELDS WITH SEAL WELDS TOP AND BOTTOM UNLESS NOTED OTHERWISE.

LOUISIANA TYPE-C

REV.	DATE	BY	APP'D	DESCRIPTION
4	07/20/20	ALJ	ALJ	UPDATED JOINT WELDS TO MATCH LADOT STANDARDS PER NCR 4539
3	04/01/20	ALJ	ALJ	UPDATED WELDING CALLOUTS TO MATCH USFF STANDARDS PER NCR 4050
2	01/26/18	ALJ	JDM	UPDATED GRATE BASED ON NEW DOT CHANGES
1	02/3/16	C.S.	C.S.	ADJUSTED TOLERANCES, UPDATED TITLE BLOCK

THIS DOCUMENT IS THE PROPERTY OF U.S.F. FABRICATION, INC AND CONTAINS PROPRIETARY INFORMATION. IT SHALL NOT BE MODIFIED, COPIED, FURNISHED NOR DISTRIBUTED (IN WHOLE OR IN PART) WITHOUT PROPER AUTHORIZATION OF U.S.F. FABRICATION, INC.

INTERPRET DIMENSIONS AND TOLERANCES PER ASME Y14.5M
BREAK ALL SHARP CORNERS & EDGES TO 0.01
TOLERANCES UNLESS OTHERWISE SPECIFIED FRACTIONAL
INCHES = ± 1/16
1/16 = ± 1/32
1/32 = ± 1/64

COPYRIGHT © 2020 ALL RIGHTS RESERVED

DWN. BY: EW/ALJ CHK. BY: ECS/ALJ	SCALE: 1=12 DWG.# 100001502	SHEET: 1 of 1 SHEET SIZE: B	DATE: 8/3/15 REV: 8