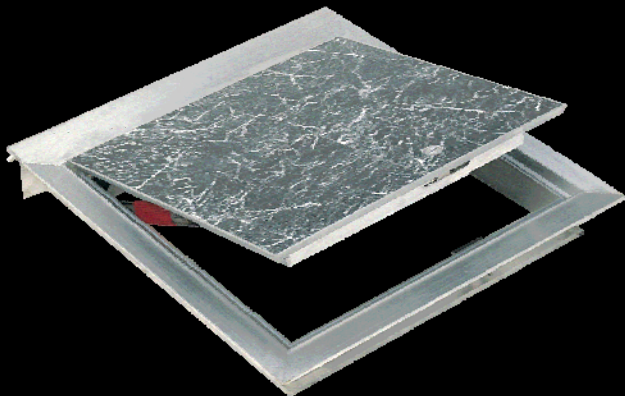
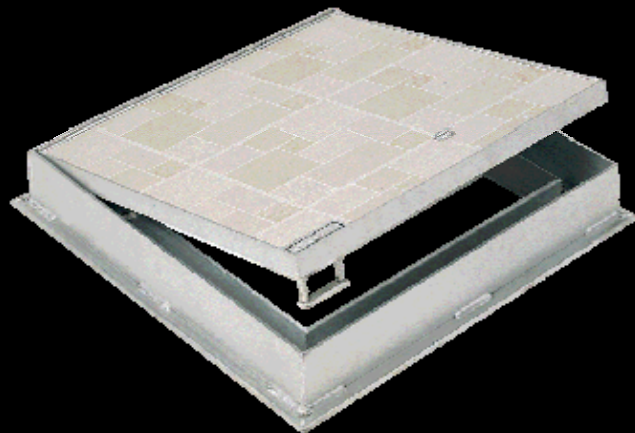


ARCHITECTURAL ACCESS



R-APS Recessed Floor Door

1/8" [3mm] recess for tile or carpet



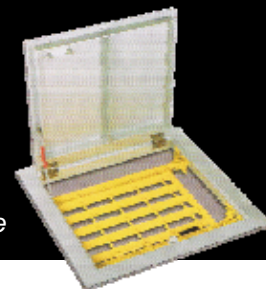
R-TPS Recessed Floor Door

1" [25mm] recess for concrete, stone or architectural tile



R-Series floor access doors preserve the architectural appeal of floor and sidewalk areas in upscale indoor and outdoor settings.

Options include
hinged safety grate



Manufacturing a complete line of engineered metal products for the construction industry, we set the standard for quality, service and innovation. For product specifications and details, visit:

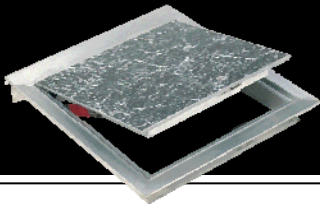
www.usffab.com



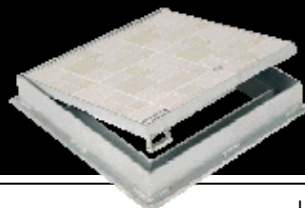
Manufacturing in the USA since 1916

U.S.F. Fabrication, Inc., Hialeah, Florida USA 1-800-258-6873 Fax: 305-882-1577 service@usffab.com
Outside USA & Canada: 1-305-364-8221 Fax: 1-305-512-7721 export@usffab.com

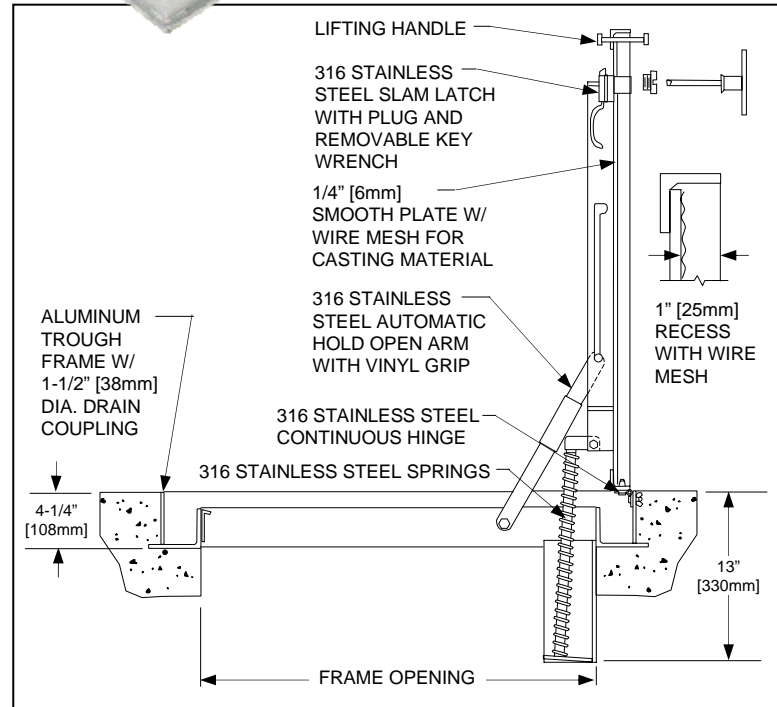
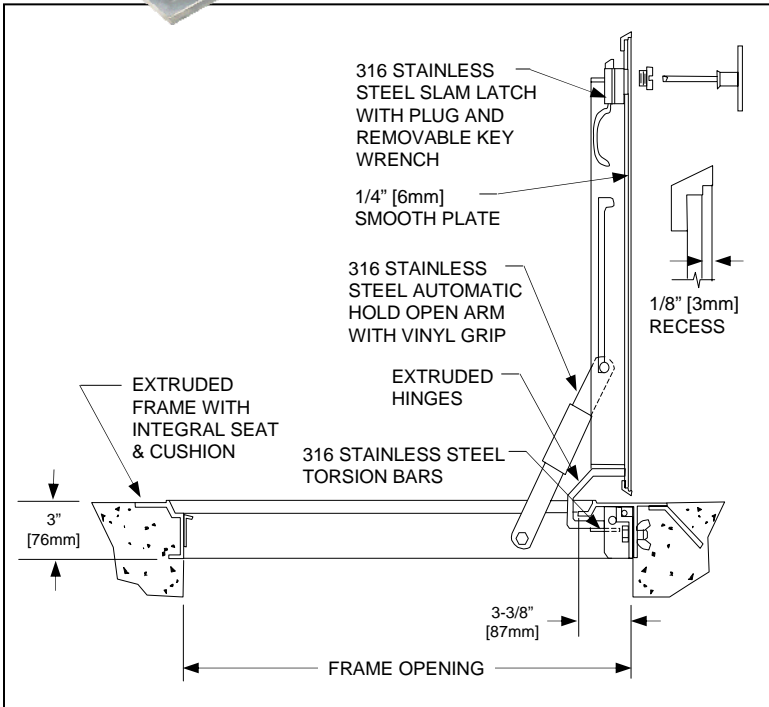
R-SERIES RECESSED FLOOR DOORS



Model R-APS
1/8" [3mm] recess for tile or carpet



Model R-TPS
1" [25mm] recess for concrete, stone or architectural tile



SPECIFICATIONS: R-APS

The recessed floor access door shall be Model R-APS as manufactured by U.S.F. Fabrication, Inc., Hialeah, Florida with the size being specified on the plans.

Cover: Cover shall be 1/4" thick aluminum smooth plate reinforced for a 150 psf [732 kg/m²] live load, and have a 1/8" [3mm] recess to receive tile or carpet. Cover shall have a 316 stainless steel hold-open arm with red vinyl grip that automatically locks the cover in the 90 degree open position.

Frame: Frame shall be extruded aluminum with integral seat and cushion with anchor flange on all four sides.

Hinges: Hinges shall be 316 stainless steel with 316 stainless steel tamper-resistant bolts/locknuts.

Springs: Door shall be equipped with 316 stainless steel torsion bars to assist in opening the door and reducing the force during closing.

Latch: Slam Latch shall be 316 stainless steel with cover plug and removable key wrench.

Finish: Cover and frame shall be mill finish aluminum. Hardware shall be 316 stainless steel.

Installation: Installation shall be in accordance with the manufacturer's instructions.

Warranty: The hatch shall be manufactured in the United States. Manufacturer shall guarantee against defects in materials and workmanship for a period of ten [10] years.

STANDARD SIZES

FRAME OPENING Width x Hinge Side In [mm]	Model R-APS	Model R-TPS
	WEIGHT Lbs [KG]	
24 x 24 [610 x 610]	45 [20]	80 [36]
24 x 30 [610 x 762]	50 [23]	90 [41]
24 x 36 [610 x 914]	60 [27]	100 [46]
30 x 30 [762 x 762]	60 [27]	105 [48]
30 x 36 [762 x 914]	70 [32]	115 [53]
30 x 48 [762 x 1219]	85 [39]	140 [64]
36 x 36 [914 x 914]	75 [34]	135 [62]
36 x 48 [914 x 1219]	95 [43]	n/a
42 x 42 [1067 x 1067]	95 [43]	n/a

SPECIFICATIONS: R-TPS

The recessed floor access door shall be Model R-TPS as manufactured by U.S.F. Fabrication, Inc., Hialeah, Florida with the size being specified on the plans.

Cover: Cover shall be 1/4" thick aluminum smooth plate reinforced for a 300 psf [1464 kg/m²] live load, and have a 1" [25mm] recess with wire mesh to receive concrete, stone or tile. Cover shall be equipped with a flush lifting handle and a 316 stainless steel hold-open arm with red vinyl grip that automatically locks the cover in the 90 degree open position.

Frame: Frame shall be aluminum with a continuous anchor flange and 1-1/2" [38mm] dia. drain coupling.

Hinges: Hinges shall be 316 stainless steel with 316 stainless steel tamper-resistant bolts/locknuts.

Springs: Door shall be equipped with 316 stainless steel compression springs to assist in opening the door and reducing the force during closing.

Latch: Slam latch shall be 316 stainless steel with cover plug and removable key wrench.

Finish: Cover and frame shall be mill finish aluminum. Hardware shall be 316 stainless steel.

Installation: Installation shall be in accordance with the manufacturer's instructions.

Warranty: The hatch shall be manufactured in the United States. Manufacturer shall guarantee against defects in materials and workmanship for a period of ten [10] years.

OPTIONS

- Recessed cylinder lock
- Frame skirts for easy casting into a concrete top slab
- Fiberglass insulation with metal liner
- Anodized finish
- Stainless steel safety chains and posts
- Fall through prevention systems
- Double and multiple covers

