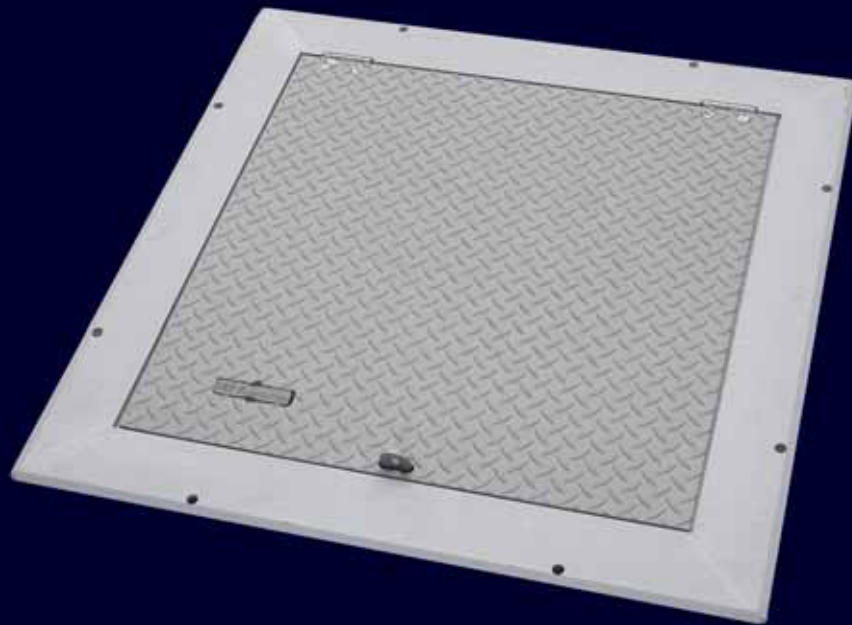


# RETROFIT DOORS

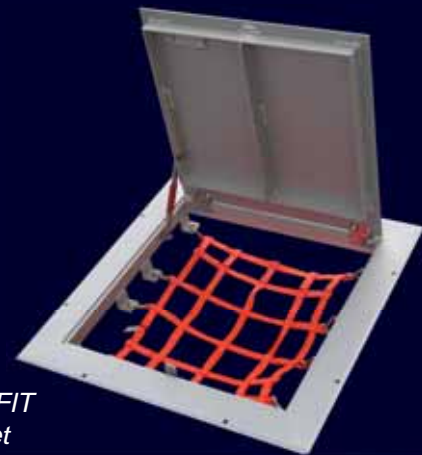


## APS or APD RETROFIT Access Hatches

Angle Frame, Aluminum, Pedestrian Load Ratings;  
Single, Double and Multiple Covers.

Above: Model APS300 RETROFIT shown with standard features.

Specify RETROFIT angle frame access hatches for rehab/replacement of existing steel hatches. It is an economical and quality solution for sidewalk, floor and utility applications.



APS RETROFIT  
with safety net



Manufacturing a complete line of engineered metal products for the construction industry, we set the standard for quality, service and innovation. For product specifications and details, visit:

[www.usffab.com](http://www.usffab.com)

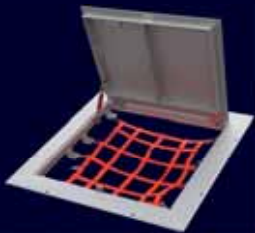


Manufacturing in the USA since 1916

U.S.F. Fabrication, Inc., Hialeah, Florida USA 1-800-258-6873 Fax: 305-882-1577 service@usffab.com  
Outside USA & Canada: 1-305-364-8221 Fax: 1-305-512-7721 export@usffab.com

# RETROFIT ACCESS HATCHES

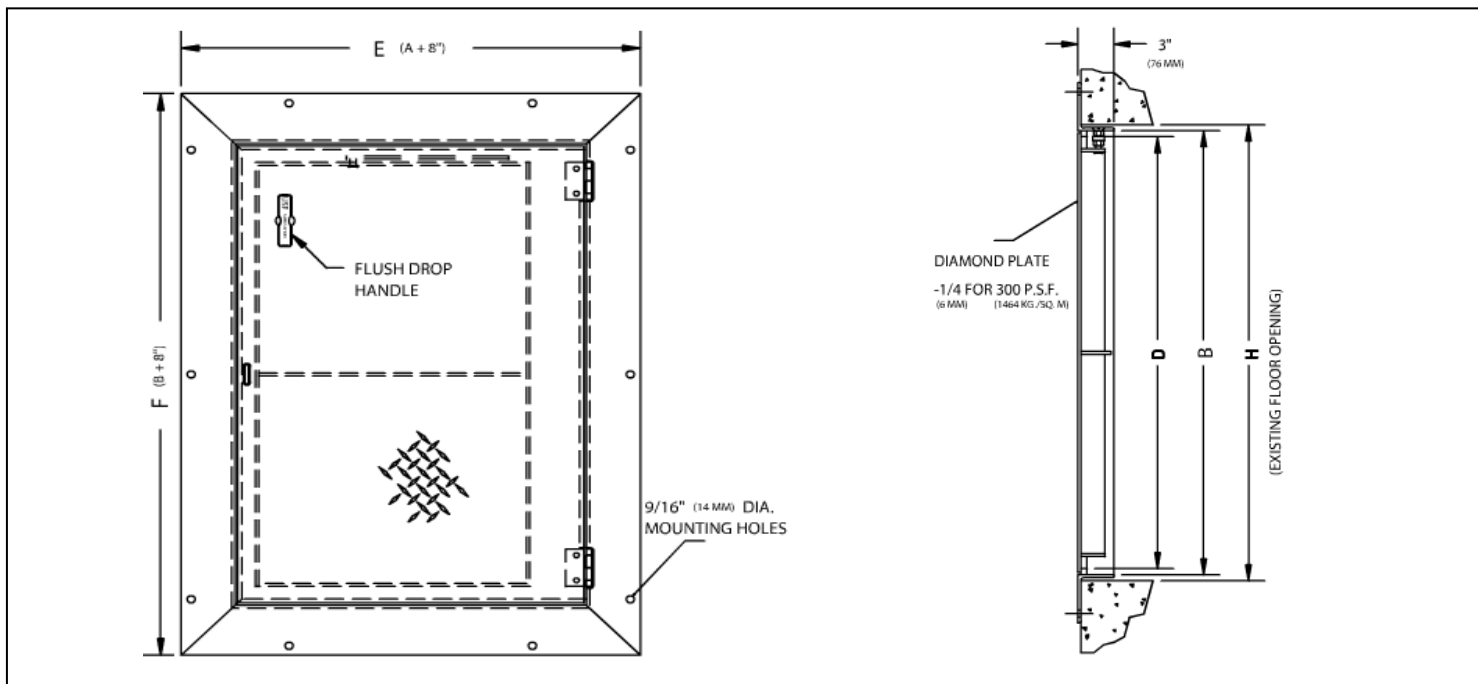
Angle Frame, Aluminum



**Model APS RETROFIT**  
with Hatch Safety Net



**Model APS RETROFIT**  
Pedestrian Load Rating



## SPECIFICATIONS

The angle frame floor access door shall be **Model APS300 RETROFIT** as manufactured by U.S.F. Fabrication, Inc. with the size being specified on the plans.

**Cover:** 1/4-inch (6.4mm) aluminum diamond plate cover reinforced for 300 psf (1465 kg/m<sup>2</sup>) live load. Equipped with cast aluminum flush lifting handle and 316 stainless steel hold-open arm with red vinyl grip that automatically keeps the cover in its open/upright position.

**Frame:** Extruded aluminum angle with beveled edge on horizontal flange that slopes to floor surface, 9/16-inch (14mm) diameter holes for bolting flange to existing floor, and an integral door seat on all four sides.

**Hardware:** 316 stainless steel hinges and tamper resistant bolts/lock nuts.

**Security:** Aluminum staple protrudes through cover for user supplied padlock.

**Finish:** Aluminum cover and frame have mill finish.

**Installation:** Installation shall be in accordance with the manufacturer's instructions.

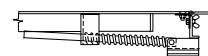
**Warranty:** Manufacturer shall guarantee against defects in materials and workmanship for a period of ten years.

## STANDARD SIZES (Custom sizes available.)

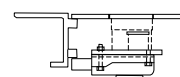
SINGLE COVER - APS300 RETROFIT (1/4-inch(6MM) Cover Plate)		
FRAME OPENING Width & Hinge Side	CLEAR OPENING Width & Hinge Side	WEIGHT Lbs (KG)
23 x 23 (584 x 584)	20 x 22 (508 x 559)	41 (19)
23 x 29 (584 x 737)	20 x 28 (508 x 711)	48 (22)
23 x 35 (584 x 889)	20 x 34 (508 x 864)	54 (24)
29 x 29 (737 x 737)	26 x 28 (660 x 711)	56 (25)
29 x 35 (737 x 889)	26 x 34 (660 x 864)	63 (29)
29 x 47 (737 x 1194)	26 x 46 (660 x 1168)	79 (36)
35 x 35 (889 x 889)	31 x 34 (787 x 864)	72 (33)
35 x 47 (889 x 1194)	31 x 46 (787 x 1168)	91 (41)
41 x 41 (1041 x 1041)	37 x 40 (940 x 1016)	93 (42)

DOUBLE COVER - APS300 RETROFIT (1/4-inch(6MM) Cover Plate)		
FRAME OPENING Hinge & Width Side	CLEAR OPENING Hinge & Width Side	WEIGHT Lbs (KG)
29 x 47 (737 x 1194)	28 x 43 (711 x 1092)	115 (52)
29 x 53 (737 x 1346)	28 x 49 (711 x 1245)	125 (57)
35 x 47 (889 x 1194)	34 x 42 (864 x 1067)	130 (59)
35 x 59 (889 x 1499)	34 x 53 (864 x 1346)	153 (69)
41 x 47 (1041 x 1194)	40 x 41 (1016 x 1041)	144 (65)
47 x 47 (1194 x 1194)	46 x 40 (1168 x 1016)	159 (72)
47 x 53 (1194 x 1346)	46 x 46 (1168 x 1168)	172 (78)
47 x 71 (1194 x 1803)	46 x 64 (1168 x 1626)	217 (98)
59 x 59 (1499 x 1499)	58 x 53 (1473 x 1346)	221 (100)

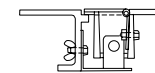
## OPTIONS



**Horizontal Springs**  
(open or enclosed)



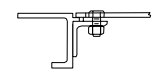
**Recessed Cylinder Lock**  
(with threaded lid)



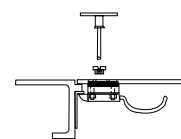
**Recessed Padlock Staple**



**Nut Rail**  
(with sliding nuts)



**Bolt Lock**  
(hex or tamper proof)



**Slam Latch** (stainless,  
standard on all H-20 models)



Hinged  
Safety  
Grate

### Additional Options:

- Bituminous Paint
- Anodized Finish
- Reading Lid
- Slip Resistant Surface bonded to Cover Plate
- Insulation under Cover
- Safety Chains & Posts
- Internal Mounting Holes

