



Utility Access Doors

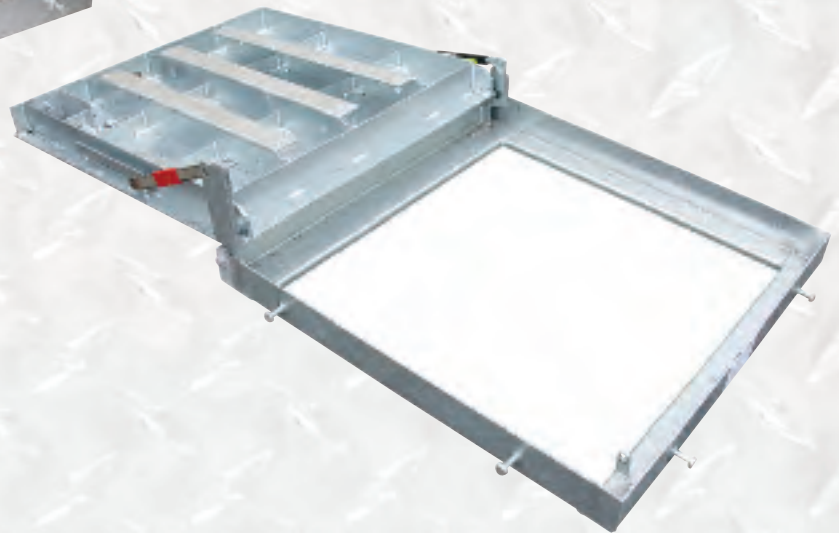
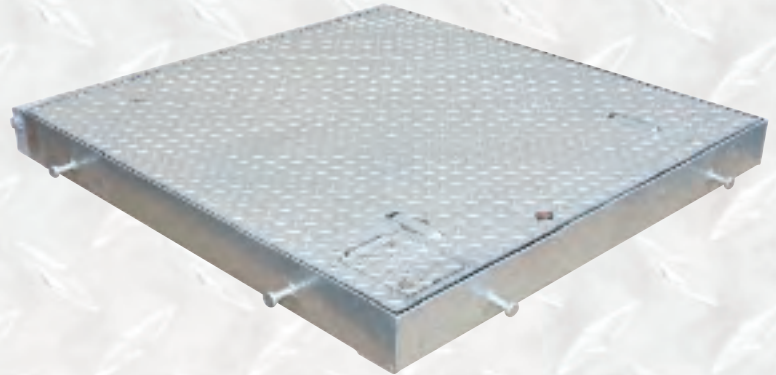


**Fabricating Solutions
Since 1916**



**Manufacturing a complete line of engineered
Metal Doors for Underground Utilities Access:
Electrical, Gas, Telecom, Fiber Optics, CCTV and Water.**

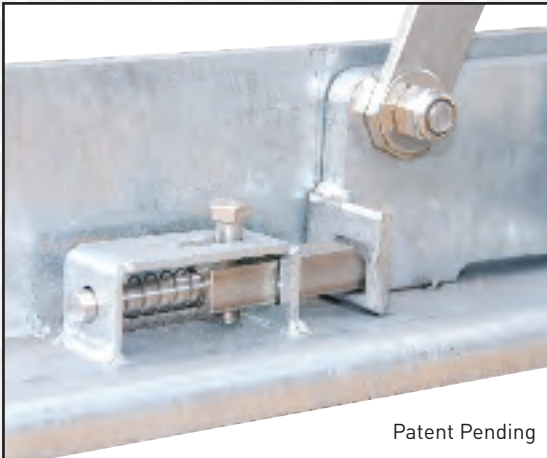
U SERIES



STANDARD FEATURES

- Aluminum diamond plate cover reinforced for 16,000 pound wheel loads (designed to be installed in off-street areas that may receive incidental traffic)
- Steel frame with hot dipped galvanized finish
- Two (2) flush lifting handles
- Hot dipped galvanized steel hold-open arm with a red vinyl grip that locks the door in a full upright and locked position
- Spring-loaded latch to allow door to open 180-degrees
- Stainless Steel Slamlock mechanism operated by a captive, tamper resistant Penta Head bolt and inside release handle
- Maximum lifting force for any one door leaf is less than 35 pounds
- One (1) year manufacturer's warranty

UNIQUE FEATURES

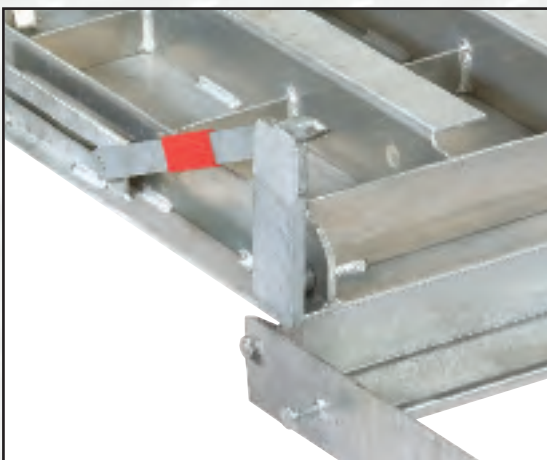


SIMPLE

Spring-loaded latch allows the door leaf to open a full 180-degrees without the use of tools or the removal of bolts or hardware

SECURE

Stainless Steel Slamlock with inside release handle securely latches door in closed position. Unique Penta Head release bolt is captive, tamper resistant and is designed to prevent dirt and debris from restricting the operation of the latch



SAFE

The hold-open arm remains engaged when the door is rotated to the 180-degree open position. During closing, the door will return to its full upright and locked position

SPECIFICATION

The Utility Access Hatch shall be a model UHS (single leaf) or UHD (double leaf) as manufactured by U.S.F. Fabrication, Inc., Hialeah, Florida and Ogden, Utah with the size being specified on the plans. The door leaf(s) shall be ¼" aluminum diamond plate reinforced for 16,000 pound wheel loads in off-street locations that may receive incidental vehicle traffic. The frame shall be a minimum 3/16" steel material and be hot dipped galvanized after fabrication.

The Utility Access Hatch shall be equipped with a steel galvanized hold-open arm. The hold-open arm shall be a one piece design that automatically secures the cover into its full upright and locked position. The hold-open arm shall include a red vinyl grip to provide visual awareness and enhance operator safety. The door shall also be equipped with a quick release latch with a stainless steel spring that allows the door to rotate back to a full 180-degree open position, without the use of tools or the removal of hardware. The hold-open arm shall remain engaged throughout the door's 180-degree rotation.

The cover shall be equipped with a Stainless Steel Slamlock that is operated from the outside by turning a captive, tamper resistant Penta Head bolt that does not protrude above the cover surface. The Slamlock shall be equipped with an inside release handle as required by the National Electrical Code, section 110.76, paragraph B. The latching system is designed so as not to allow dirt and debris to restrict the operation of the cover. The Slamlock shall automatically latch upon closing the cover.

Each cover shall be equipped with two steel galvanized lifting handles that rest flush with the top of the cover(s) when closed. No single cover shall require more than 35 pounds of force to lift. Larger covers may be equipped with a corrosion resistant compressive lift assist.

All components of the hatch shall be aluminum, steel galvanized or stainless steel. The hatch must be installed so that the entire frame, including the seat on which the cover reinforcing rests, is supported by concrete designed to carry the intended load.

Manufacturer shall guarantee the product to be free of defects in material and workmanship for a period of one (1) year from the date of purchase. The entire assembly shall be manufactured and assembled in the United States.

AVAILABLE OPTIONAL FEATURES



Gas shocks for lift assist



Recessed padlock box



Custom lettering available

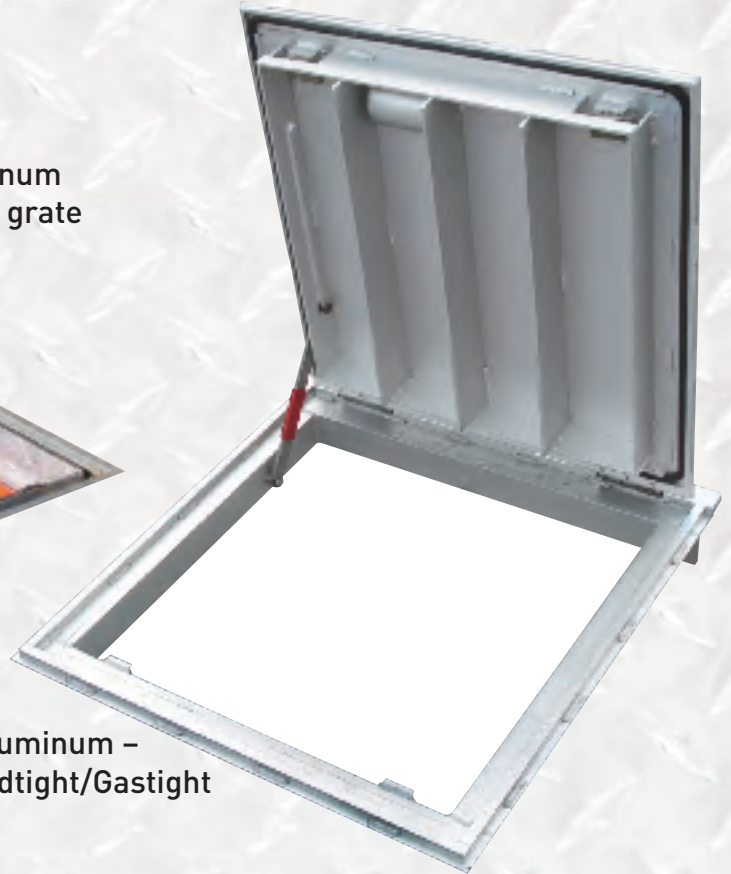
Slip Resistant Door Surface Treatment • Custom Sizes Available • Additional Bolt Lock

SPECIALTY VAULT DOORS

U.S.F. Fabrication manufactures the most extensive line of doors for underground access. With over 94 years experience and 60,000+ drawings, we have solutions for any application.



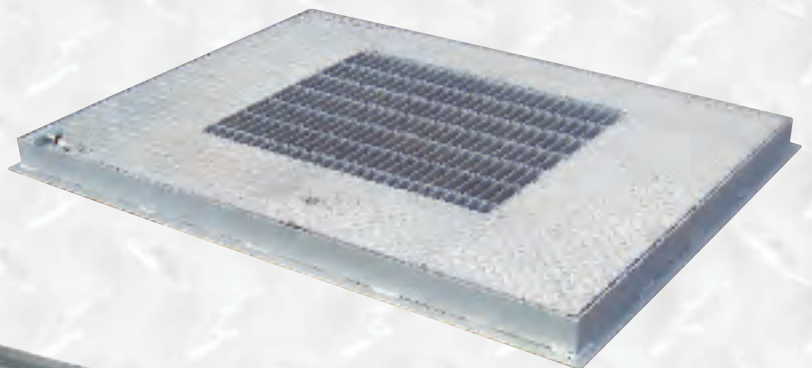
AHS Aluminum
with safety grate



W-APS Aluminum –
Floodtight/Gastight



UFC Steel Galvanized



TPS Steel Galvanized
with vent grate

Looking Toward The Future...

A Message from Alex DeBogory, Jr.



The origins of our company date back to 1916 when Alex DeBogory Sr. established a company near downtown Miami known as the 7th Street Bicycle Repair and Welding Company.

He believed in the axiom that "A solid foundation is prerequisite to build". This is true in every type of construction or project, it is also true when building a business. Alex DeBogory, Sr. recognized that quality products, superior craftsmanship and outstanding customer service would serve as the hallmark for this foundation.

This philosophy has been the trademark that allowed a small bicycle repair shop to develop into the four distinct companies that we are today.

U.S. Foundry & Mfg. Corp (Inc. 1937) Formerly known as The 7th Street Bicycle Repair & Welding Company (1916-1920), U.S. Welding & Iron Works (1920-1937):

U.S. Precast Corp. (Inc. 1970)

Florida Lift Stations Corp. (Inc. 1980)

U.S.F. Fabrication, Inc. (Inc. 1996)

As the companies and divisions grew, we knew we could better serve our customers by creating new companies with names that would better identify their individual products and services. Additionally, this would enable each business and its employees to gain their own pride and identity.

In August of 1996, the Fabrication Division of U.S. Foundry & Mfg. Corp. became U.S.F. Fabrication, Inc. and relocated to a modern new manufacturing facility. The company consists of four divisions: Aluminum Floor Access Door Division, Steel Fabrication Division, Steel Grating Division and Rolling Division.

As we lead our industry into the 21st century, U.S.F. Fabrication, Inc. remains proud of our humble beginnings. We will continue to "Set the Standard" by investing in our people and technology, to facilitate continuous improvement of our existing products and the development of new ones so we may better serve our customers and their needs.

The four generations of the DeBogory family thank you for affording us the opportunity to grow and serve you.

Great Oaks From Little Acorns Grow



Original Plant - 1916



Hialeah, FL Plant - 1996



Ogden, UT Plant - 2007

U.S.F. Fabrication, Inc.

HIALEAH, FL PLANT:
3200 West 84 Street,
Hialeah, Florida USA 33018
305.556.1661

USA 1-800-258-6873
Fax 305-882-1577

OGDEN, UT PLANT:
2382 Rulon White Blvd.
Ogden, Utah 84404

service@usffab.com

WWW.USFFAB.COM

