

Our Commitment



U.S.F. Fabrication, Inc. utilizes a "World Class Manufacturing" program for continuous improvement, which has led to the development of many improvements in our manufacturing process. These advancements have resulted in improved quality, shorter lead times and lower manufacturing costs. The gains in these areas have helped us offset the rising costs of material and labor and allowed us to remain competitive in the marketplace without compromising our commitment to quality and service.

Our People



When you call U.S.F. Fabrication's toll free number you will speak to friendly and knowledgeable people who can assist you with everything from quotes to technical questions about our products. Our people are committed to satisfying our customers' needs in every way possible. From our receptionist to our shipping department, every employee's goal is to exceed our customers' greatest expectations when it comes to service.



Our Facility



Our modern manufacturing facility in Hialeah, FL has over 80,000 square feet of manufacturing space and 18,000 square feet of office space. This facility has allowed us to increase production of our standard products such as floor doors, grating and accessories. We utilize the latest technology and CNC metal working equipment that enables us to meet all of your custom fabrication needs as well. In addition, we can cut, burn and roll steel, stainless steel and aluminum material as well as other specialty metals.



LOOKING TOWARD THE FUTURE...



The origins of our company date back to 1916 when Alex DeBogory Sr. established a company near downtown Miami known as the 7th Street Bicycle Repair and Welding Company.

He believed in the axiom that "a solid foundation is a prerequisite to build". This is true in every type of construction or project, it is also true when building a business. Alex DeBogory, Sr. recognized that quality products, superior craftsmanship, and outstanding customer service would serve as the hallmark for this foundation.

This philosophy has been the trademark that allowed a small bicycle repair shop to develop into the seven distinct companies we are today.

U.S. Foundry & Mfg. Corporation. (Inc. 1937) Formerly known as the 7th Street Bicycle Repair & Welding Company (1916-1920). U.S. Welding & Iron Works (1920-1937).

U.S. Precast Corp. (Inc. 1970)
Florida Lift Stations Corp. (Inc. 1980)
Tri-County Concrete Products, Inc. (Inc. 1987)
U.S. Holdings, Inc. (Inc. 1990)
U.S.F. Fabrication, Inc. (Inc. 1996)
U.S. Environmental Services, Inc. (Inc. 1998)

As the companies and divisions grew, we knew we could better serve our customers by creating new companies with names that would better identify their individual products and services. Additionally, this would enable each business and its employees to gain their own pride and identity.



In August of 1996 the Fabrication Division of U.S. Foundry & Mfg. Corp. became U.S.F. Fabrication, Inc. and relocated to a modern new manufacturing facility. The Company consists of four divisions: Aluminum Floor Access Door Division, Steel Fabrication, Steel Grating Division and Rolling Division.

As we lead our industry into the 21st century, U.S. F. Fabrication, Inc. remains proud of our

GREAT
OAKS
FROM
LITTLE
ACORNS
GROW.



humble beginnings. We will continue to "Set the Standard" by investing in our people and technology, to facilitate continuous improvement of our existing products and the development of new

ones so that we may better serve our customers and their needs.

The four generations of the DeBogory family thank you for affording us the opportunity to grow and serve you.

Alex DeBogory

Sincerely,

Alex DeBogory, Jr.
President



3200 West 84 Street, Hialeah, Florida 33018
(305) 556-1661 • 1-800-258-6873 • Fax (305) 882-1577
website: www.usffab.com email: service@usffab.com

U.S.F.
FABRICATION INC.
FLOOR ACCESS DOORS, GRATING & MISC. METAL FABRICATION



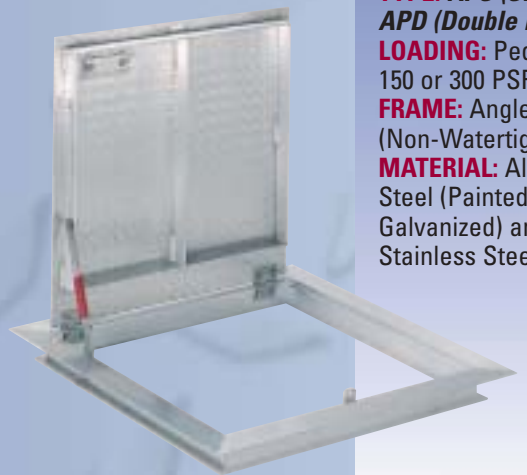
Fabricating
Solutions



Since
1916

FLOOR DOORS

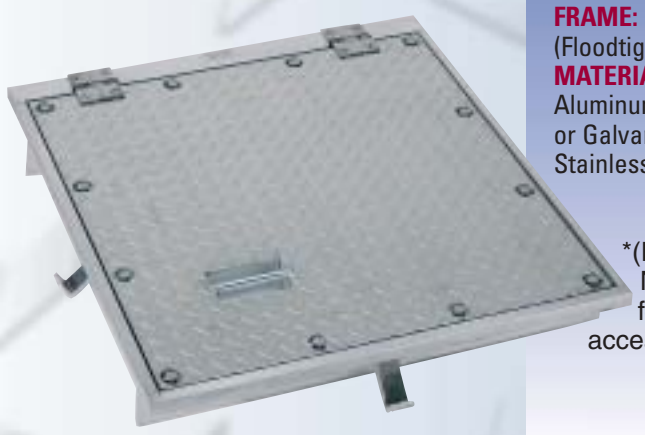
Call 1-800-258-6873



**TYPE: APS (Single leaf)
APD (Double leaf)**
LOADING: Pedestrian
150 or 300 PSF
FRAME: Angle Type
(Non-Watertight)
MATERIAL: Aluminum,
Steel (Painted or
Galvanized) and
Stainless Steel



**TYPE: TPS (Single Leaf)
TPD (Double Leaf)**
LOADING: Pedestrian
(300 PSF)
FRAME: Trough Type
(Watertight)
MATERIAL: Available in
Aluminum, Steel (Painted
or Galvanized) and
Stainless Steel



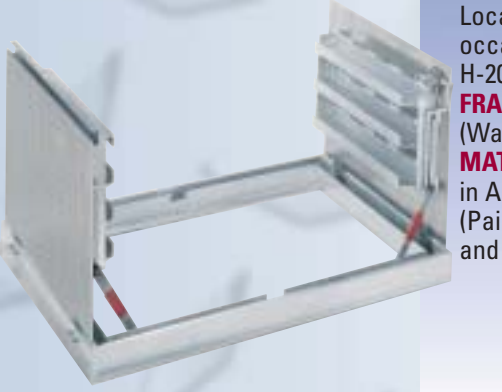
TYPE: B-APS (W-APS*)
LOADING: Pedestrian
300 PSF or H2O Traffic
FRAME: Special
(Floodtight/Gastight)
MATERIAL: Available in
Aluminum, Steel (Painted
or Galvanized) and
Stainless Steel

*(Not Shown)
New Style door
features easy
access and latching.



**TYPE: AHS (Single Leaf)
AHD (Double Leaf)**
LOADING: H-20
(Aluminum for Offstreet
Locations That May
Occasionally Receive
H-20 Loads)
FRAME: Angle Type
(Non-Watertight)
MATERIAL: Available in
Aluminum, Steel (Painted
or Galvanized) and
Stainless Steel

Shown: Type AHS
aluminum with
horizontal springs and
recessed padlock box.



**TYPE: THS (Single Leaf)
THD (Double Leaf)**
LOADING: H-20
(Aluminum for Offstreet
Locations that may
occasionally receive
H-20 loads)
FRAME: Trough Type
(Watertight)
MATERIAL: Available
in Aluminum, Steel
(Painted or Galvanized)
and Stainless Steel



TYPE: FPS
LOADING: Pedestrian
625 PSF
FRAME: Bolt down
(Floodtight)
MATERIAL: Aluminum



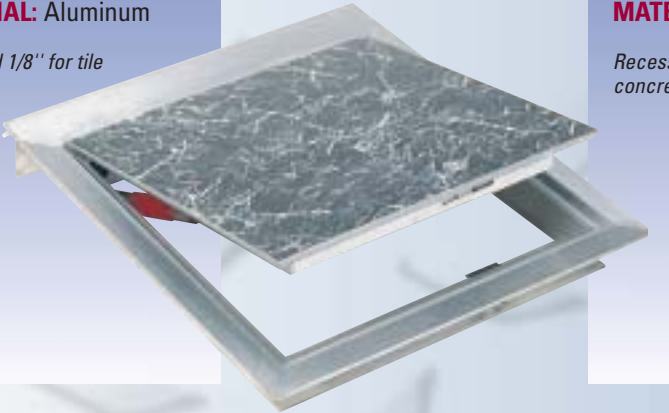
TYPE: BPS
LOADING: Standard 300
PSF (Others Available on
Request)
FRAME: No Frame – Bolts
on to structure
MATERIAL: Available in
Aluminum, Steel (Painted
or Galvanized) and
Stainless Steel



TYPE: BPC
LOADING: Pedestrian
300 PSF
FRAME: No Frame, Bolts
on to Structure
MATERIAL: Aluminum, Steel
(Painted or Galvanized) and
Stainless Steel

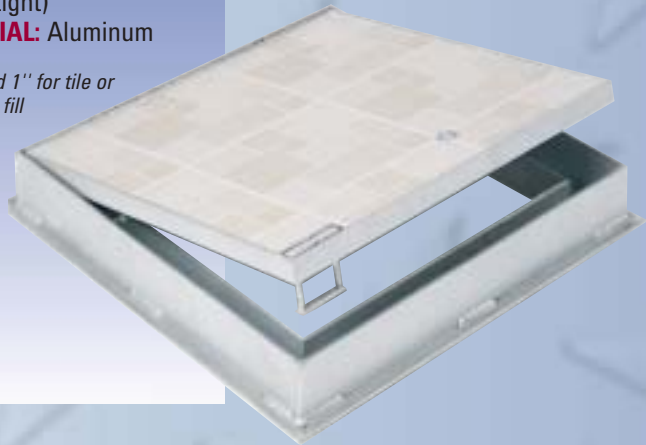
TYPE: R-APS
LOADING: Pedestrian
150 PSF
FRAME: Angle Type
(Non-watertight)
MATERIAL: Aluminum

Recessed 1/8" for tile
or carpet



TYPE: R-TPS
LOADING: Pedestrian
300 PSF
FRAME: Trough Type
(Watertight)
MATERIAL: Aluminum

Recessed 1" for tile or
concrete fill



Standard Features

All U.S.F Fabrication Floor Access Doors include:

- 316 Stainless Steel Hardware and hinges
- Flush Lifting Handle
- 316 Stainless Steel Automatic Hold-Open Arm
- Staple for Padlock (All Pedestrian Doors)
- 316 Stainless Steel Slamlock (All H-20 Doors)
- Tamper Resistant Fasteners
- Protective Plastic Covering
- Integral Anchor Flange
- Written 10 year warranty
- Odor Reduction Gasket (aluminum trough doors)

Available Options

- Recessed Padlock Box
- Horizontal Compression Springs
- Vertical Compression Springs
- Frame Skirts
- Safety Grates
- Stainless Steel Safety Chains
- Hatch Safety Net
- Special Coatings (Epoxy, Anodized, Galvanized, Etc.)
- Frame Cushion
- Nutrail Channel
- Retrofit Design
- Milled Lettering
- Keyed Cylinder Locks
- Debris Gasket (trough doors)
- Odor Reduction Gasket (steel trough doors)

ARCHITECTURAL FLOOR DOORS

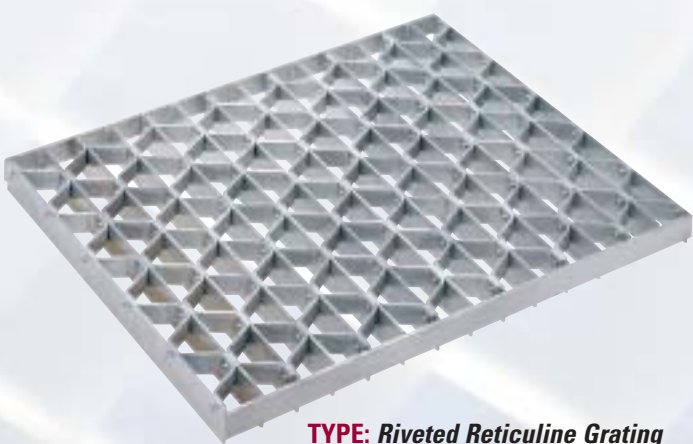
STEEL UTILITY PRODUCTS

COVERS/GRATING

Call 1-800-258-6873



TYPE: Utility Frame Cover
LOADING: 300 PSF & H2O
FRAME: Angle
MATERIAL: Steel (painted or galvanized), Stainless Steel



TYPE: Riveted Reticulate Grating
LOADING: 300 PSF or H2O
FRAME: N/A
MATERIAL: Steel (painted or galvanized), Stainless Steel



TYPE: Welded Bar Grating
LOADING: 300 PSF or H2O
FRAME: N/A
MATERIAL: Steel (Painted or Galvanized) or Stainless Steel

PUMP STATION ACCESSORIES



PORTABLE HOISTS
Available in 500, 1000
and 2,000 LB Lifting
Capacities.
Available in Galvanized
Steel or Stainless Steel



We manufacture a complete line of accessories for pump stations including mixer masts for submersible pumps, cable holders, control panel pedestals, guide rail supports, anchor bolts, ladder safety posts and debris baskets.